



# **CLASSIC** **SOLUTIONS** **FOR MODERN** **CHALLENGES.**

**PREMIX & PREMIX 1000**  
**CEMENTICIOUS FINISH**



## **PREMIX & PREMIX 1000 CEMENTICIOUS FINISH**

IMASCO PREMIX is a mixture of portland cement (conforming to ASTM C150), hydrated lime (conforming to ASTM C206), inert aggregates, and additives specially blended to provide a durable textured colour coat.

### **THE ADVANTAGES**

- Durable finish
- Lasts the life of construction
- Old world appearance
- High variety of texture options.

Textures shown are approximate and will vary due to job conditions.



**PREMIX - BRIAR**



**PREMIX - ENGLISH**



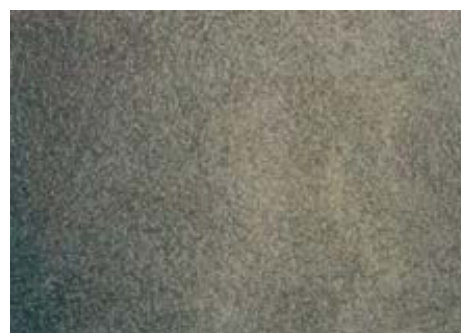
**PREMIX - HEAVY LACE**



**ARTISAN - BROOMED**



**PREMIX - CALIFORNIAN**



**PREMIX - FLOAT**